



Virginia Healthcare Workforce Briefs

Indicators from the Bureau of Labor Statistics'
Current Employment Statistics Survey
Series 2: Regional & Sectoral Employment

Series 2, Issue 107

February 2021

Inside this Brief:

Regional Employment	2
Regional Employment Growth	3
Subsector Employment	3
Subsector Employment Growth	4
Region Map	5
About the Data	6

Highlights

- ◆ Data in this series are not seasonally adjusted and exhibit short-term volatility from fluctuations in holidays, weekends, weather and other seasonal factors. Estimates for the most recent month are preliminary.
- ◆ Hampton Roads was the only region in the state that enjoyed positive HC&SA employment growth during the month. In January, this region created 100 new HC&SA jobs, a gain that represents a one-month annualized employment growth rate of 1.3%. Northern Virginia saw a small decline in HC&SA employment with the loss of 200 jobs, while Richmond's HC&SA sector experienced a larger decline of 1,000 jobs. Meanwhile, the Rest of Virginia lost 2,000 HC&SA jobs during the month.
- ◆ Every HC&SA subsector in the state experienced a decline in employment in January. Nursing & Residential Care Facilities saw the largest decline with the loss of 1,300 jobs during the month. At the same time, Social Assistance and Hospitals lost 800 and 700 jobs, respectively, in January. Ambulatory Health Care Services were the least impacted by this month's downturn in employment. This HC&SA subsector only lost 300 jobs in January, which translates into a -1.9% annualized growth rate.

Data in this report are not seasonally adjusted. Self-employed persons, including health professionals in private practice, are not included.

Data in Brief

Not Seasonally Adjusted*	Employment, in Thousands				Growth Rate, Annualized		
	Jan. 2020	Oct. 2020	Dec. 2020	Jan. 2021	12 Month	3 Month	1 Month
Virginia							
Total Nonfarm	4,041.4	3,892.8	3,894.2	3,837.1	-5.1%	-5.6%	-16.2%
Health Care & Social Assistance	459.0	443.0	442.1	439.0	-4.4%	-3.6%	-8.1%
Hampton Roads							
Total Nonfarm	792.0	764.0	763.4	752.1	-5.0%	-6.1%	-16.4%
Health Care & Social Assistance	96.6	92.9	92.1	92.2	-4.6%	-3.0%	1.3%
Northern Virginia							
Total Nonfarm	1,519.2	1,456.5	1,459.7	1,442.3	-5.1%	-3.8%	-13.4%
Health Care & Social Assistance	139.9	133.6	133.7	133.5	-4.6%	-0.3%	-1.8%
Richmond							
Total Nonfarm	686.5	652.6	654.3	642.0	-6.5%	-6.3%	-20.4%
Health Care & Social Assistance	88.6	83.7	83.6	82.6	-6.8%	-5.2%	-13.4%
Rest of Virginia							
Total Nonfarm	1,043.7	1,019.7	1,016.8	1,000.7	-4.1%	-7.2%	-17.4%
Health Care & Social Assistance	133.9	132.8	132.7	130.7	-2.4%	-6.2%	-16.7%

Preliminary estimates are italicized

*Seasonally adjusted data are adjusted by the Bureau of Labor Statistics to account for weather and other seasonal changes. Since the U.S. Bureau of Labor Statistics does not provide seasonally adjusted data at this level, this series uses non-seasonally adjusted data exclusively. Seasonal variation may account for some of the variation in time series data. When comparing data in this series to other HWDC series or other publications it is important to note whether the data reported have been seasonally adjusted.

Regional HC&SA Employment Growth, Level

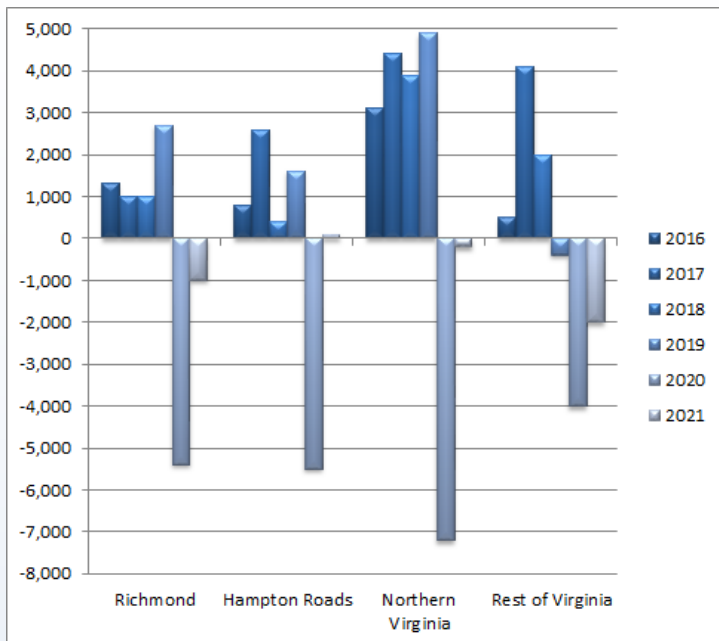


Figure 1: Annual & YTD Change in HC&SA Regional Employment (Not Seasonally Adjusted, Full-Year Change for 2016-2020, Year-to-Date Change for 2021).

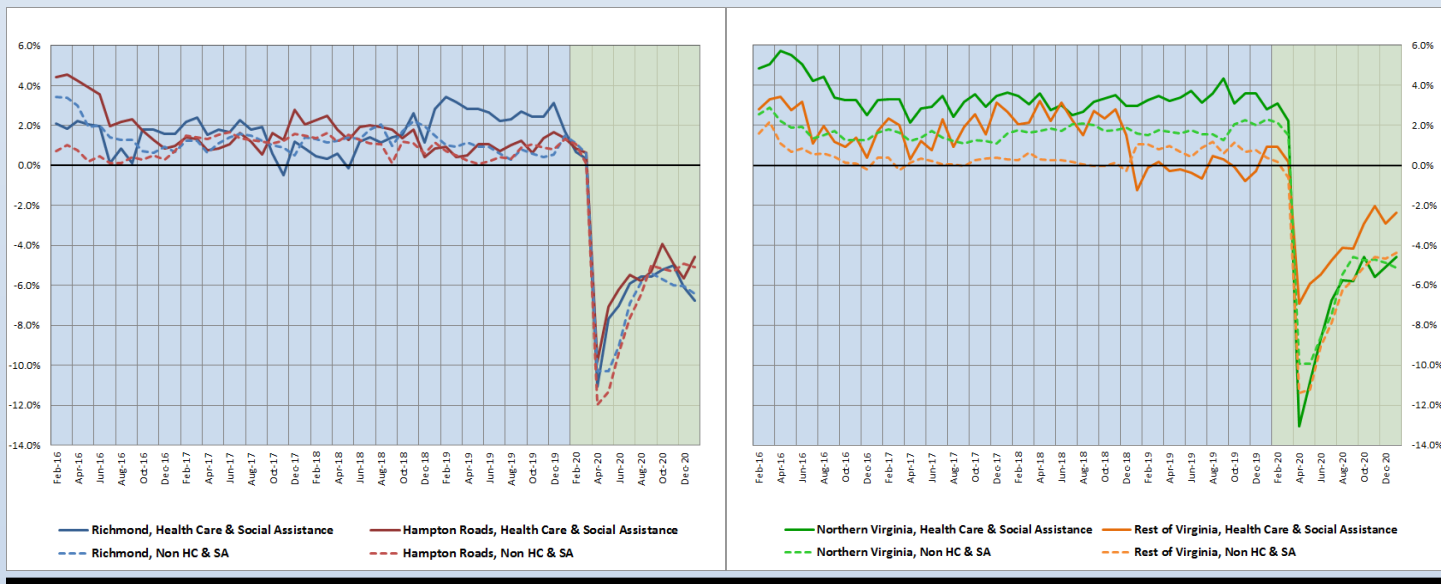
According to the preliminary data released on Monday, March 15, 2021, by the U.S. Department of Labor, Bureau of Labor Statistics, the start of the new year was a difficult time for HC&SA employment across Virginia’s four major regions. Only Hampton Roads was able to increase HC&SA employment during the month. However, this increase amounted to a modest gain of 100 new jobs in January, which translates into a 1.3% annualized growth rate.

Virginia’s three other regions all experienced HC&SA employment losses in January. The job loss in Northern Virginia’s HC&SA sector was relatively mild. This region lost 200 HC&SA jobs in January, a decline that represents a one-month annualized employment growth rate of -1.8%. The employment decline in Richmond’s HC&SA sector was more dramatic as this region lost 1,000 jobs during the month. This loss translates into a one-month annualized growth rate of -13.4%. However, the most significant job losses occurred outside of the state’s major metropolitan areas as the Rest of Virginia lost 2,000 HC&SA jobs in January.

Year-Over-Year Regional Employment Growth

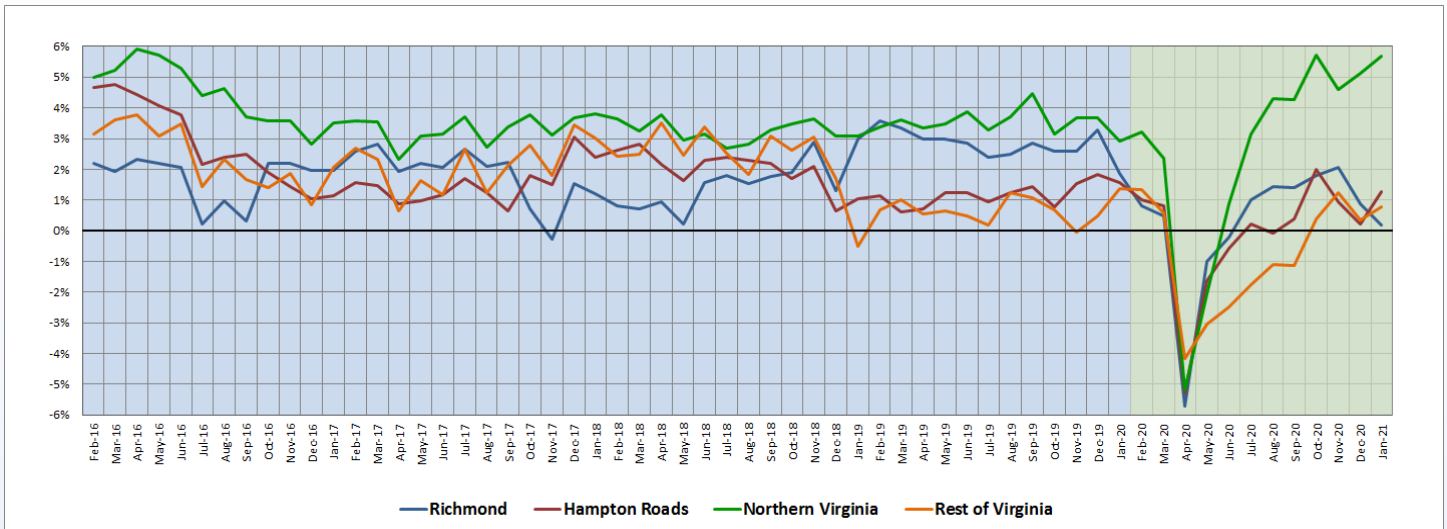
Throughout the second half of 2020, year-over-year HC&SA employment growth in the Rest of Virginia has been the most resistant to the negative economic effects of the coronavirus pandemic, and this trend has continued going into the start of 2021. Despite the loss of 2,000 jobs in January, the Rest of Virginia’s year-over-year HC&SA employment growth rate increased from -2.93% to -2.39%. Hampton Roads and Northern Virginia also enjoyed increases to their year-over-year HC&SA employment growth rates to -4.55% and -4.57%, respectively, in January. As for Richmond, its year-over-year HC&SA employment growth rate fell from -6.07% to -6.77%.

Figure 2: Year-Over-Year Employment Growth (Not Seasonally Adjusted).



12-Month Average Employment Growth by Region

Figure 3: 12-Month Moving Average, HC&SA Regional Employment Growth Rate (Not Seasonally Adjusted).



Ever since last April, all four regions of the state have seen dramatic increases to their 12-month HC&SA employment growth rate moving averages. However, Northern Virginia’s moving average has pulled away from that of the other three regions thanks to a particularly large ascent over the past nine months. In January, Northern Virginia’s HC&SA sector experienced an increase to its 12-month employment growth rate moving average from 5.14% to 5.67%. Hampton Roads also saw a significant increase to its moving average from 0.21% to 1.28% in January, while the Rest of Virginia experienced a more modest rise from 0.34% to 0.79%. Only Richmond’s HC&SA sector witnessed a decline in its 12-month employment growth rate moving average, which fell from 0.88% to 0.19% in January.

Subsector Employment Growth

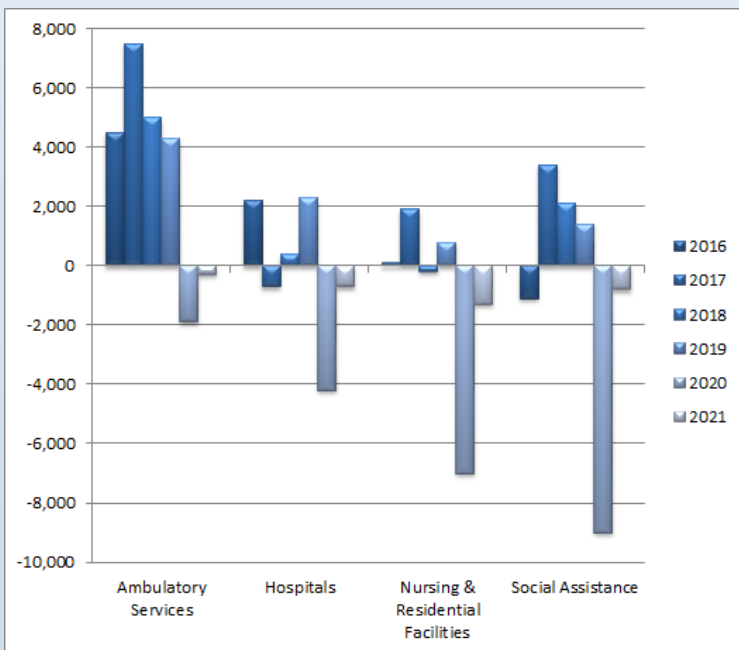


Figure 4: Annual & YTD Change in HC&SA Subsector Employment (Not Seasonally Adjusted, Full-Year Change for 2016-2020, Year-to-Date Change for 2021).

In 2020, every HC&SA subsector in Virginia experienced negative full-year employment growth, and 2021 has begun on a similar note. In January, all four HC&SA subsectors lost jobs, which last occurred in April 2020 during the initial stages of the coronavirus pandemic. The largest decline in employment came from Nursing & Residential Care Facilities, which lost 1,300 jobs during the month. This continues a long-term trend of falling employment in Nursing & Residential Care Facilities, which has not yet experienced any job recovery in the aftermath of the statewide lockdown measures. Since May, employment in this HC&SA subsector has fallen by 3,500.

Meanwhile, Social Assistance experienced its second consecutive month of negative employment growth with the loss of 800 jobs in January. At the same time, employment in Hospitals fell by 700. As for Ambulatory Health Care Services, this HC&SA subsector lost 300 jobs. Despite this decline, employment in this HC&SA subsector has still grown by 27,300 over the past nine months.

Distribution of Growth by Subsector

Not Seasonally Adjusted	Employment, in Thousands				Growth Rate, Annualized		
	Jan. 2020	Oct. 2020	Dec. 2020	Jan. 2021	12 Month	3 Month	1 Month
Virginia							
Health Care & Social Assistance	459.0	443.0	442.1	439.0	-4.4%	-3.6%	-8.1%
<i>Ambulatory Health Care Services</i>	192.5	191.2	191.1	190.8	-0.9%	-0.8%	-1.9%
<i>Hospitals</i>	108.1	104.7	104.2	103.5	-4.3%	-4.5%	-7.8%
<i>Nursing & Residential Care Facilities</i>	78.3	72.2	71.8	70.5	-10.0%	-9.1%	-19.7%
<i>Social Assistance</i>	80.1	74.9	75.0	74.2	-7.4%	-3.7%	-12.1%
Hampton Roads							
Health Care & Social Assistance	96.6	92.9	92.1	92.2	-4.6%	-3.0%	1.3%
<i>Hospitals</i>	22.1	21.4	21.3	21.2	-4.1%	-3.7%	-5.5%
Northern Virginia							
Health Care & Social Assistance	139.9	133.6	133.7	133.5	-4.6%	-0.3%	-1.8%
<i>Ambulatory Health Care Services</i>	68.9	68.3	67.8	67.2	-2.5%	-6.3%	-10.1%
<i>Hospitals</i>	26.5	26.0	26.1	25.9	-2.3%	-1.5%	-8.8%

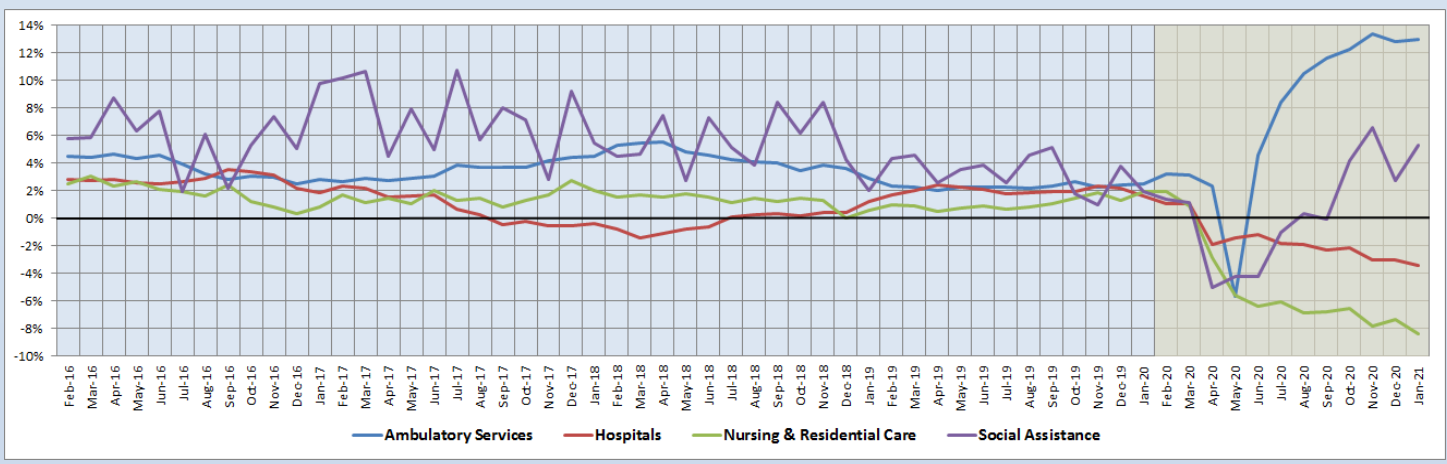
Preliminary estimates are italicized

Although every HC&SA subsector in the state is experiencing both negative short-term and negative long-term employment growth, Ambulatory Health Care Services has performed relatively well in overcoming these difficulties. In particular, Ambulatory Health Care Services is the only HC&SA subsector that currently has one-, three-, and 12-month employment growth rate that all exceed the overall statewide HC&SA average. Its 12-month employment growth rate of -0.9% is particularly impressive given the prevailing trends over the past year. Hospitals have also performed comparatively well over the past year with a 12-month employment growth rate of -4.3%.

12-Month Average Employment Growth by Subsector

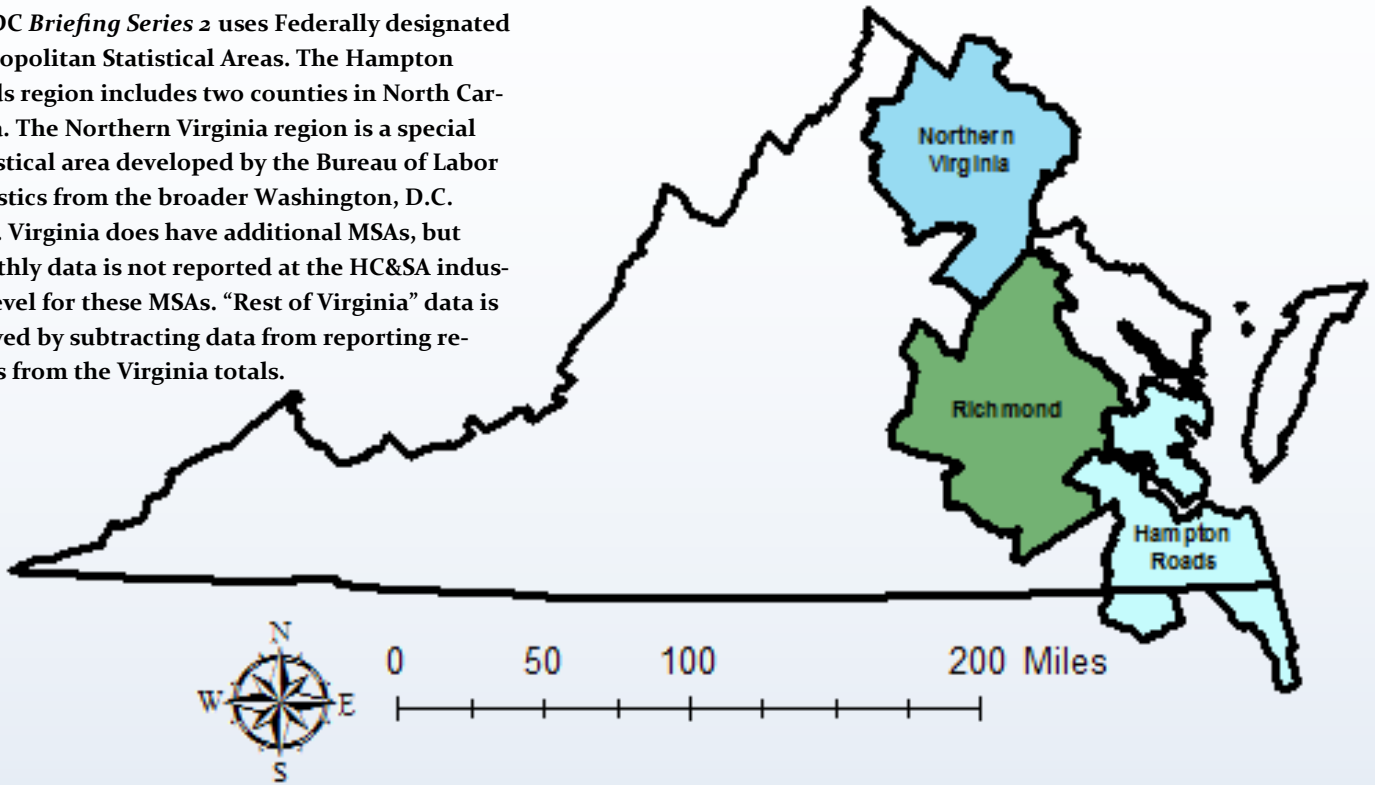
The strong long-term employment growth in Ambulatory Health Care Services can be seen more clearly through its 12-month moving average, which has risen dramatically since last April. In January, this moving average experienced a modest increase from 13.01% to 13.11%, thereby maintaining its status as the fastest-growing HC&SA subsector in the state in terms of long-term employment. Meanwhile, Social Assistance saw its 12-month employment growth rate moving average nearly double from 2.71% to 5.33% in January. As for Hospitals and Nursing & Residential Care Facilities, the 12-month employment growth rate moving averages for these two HC&SA subsectors fell to -3.41% and -8.37%, respectively.

Figure 5: 12-Month Moving Average, HC&SA Subsector Employment Growth Rate (Not Seasonally Adjusted).



Region Map

HWDC *Briefing Series 2* uses Federally designated Metropolitan Statistical Areas. The Hampton Roads region includes two counties in North Carolina. The Northern Virginia region is a special statistical area developed by the Bureau of Labor Statistics from the broader Washington, D.C. MSA. Virginia does have additional MSAs, but monthly data is not reported at the HC&SA industry level for these MSAs. “Rest of Virginia” data is derived by subtracting data from reporting regions from the Virginia totals.



Region Detail

Northern Virginia		Richmond		Hampton Roads	
<i>Northern VA, (Non-standard CES Area 94783)</i>		<i>Richmond, VA (MSA 40060)</i>		<i>Virginia Beach-Norfolk-Newport News, VA-NC (MSA 47260)</i>	
Counties:	Cities:	Counties:	Cities:	Counties:	Cities:
Arlington	Alexandria	Amelia	Colonial Heights	Gloucester	Chesapeake
Clarke	Fairfax	Caroline	Hopewell	Isle of Wight	Hampton
Culpeper	Falls Church	Charles City	Petersburg	James City	Newport News
Fairfax	Fredericksburg	Chesterfield	Richmond	Mathews	Norfolk
Fauquier	Manassas	Dinwiddie		Surry	Poquoson
Loudoun	Manassas Park	Goochland		York	Portsmouth
Prince William		Hanover			Suffolk
Rappahannock		Henrico		<i>Currituck, NC</i>	Virginia Beach
Spotsylvania		King William		<i>Gates, NC</i>	Williamsburg
Stafford		New Kent			
Warren		Powhatan			
		Prince George			
		Sussex			

Healthcare Workforce
Data Center

Perimeter Center
9960 Mayland Drive, Suite 300
Henrico, VA 23233-1463

Phone: (804) 597-4213
Fax: (804) 527-4434
E-mail: hwdc@dhp.virginia.gov
Website: www.dhp.virginia.gov/PublicResources/HealthcareWorkforceDataCenter

HWDC Staff:

Elizabeth Carter, PhD <i>Executive Director</i>	Yetty Shobo, PhD <i>Deputy Director</i>
Laura Jackson, MSHSA <i>Operations Manager</i>	Rajana Siva, MBA <i>Data Analyst</i>
Christopher Coyle <i>Research Assistant</i>	

The Department of Health Professions Healthcare Workforce Data Center works to improve the data collection and measurement of Virginia's healthcare workforce through regular assessment of workforce supply and demand issues among the 80 professions and 350,000 practitioners licensed in Virginia by DHP.

The HWDC collects data on Virginia's licensed health professionals through surveys completed during the online license renewal and application process. Survey results and data may be accessed on our website: www.dhp.virginia.gov/PublicResources/HealthcareWorkforceDataCenter/.

The HWDC also provides a series of Virginia Healthcare Workforce Briefs based data collected by the U.S. Department of Labor's Bureau of Labor Statistics and the U.S. Department of Commerce' Bureau of Economic Analysis.

Virginia Healthcare Workforce Briefs:

Series 1: State & National Employment (Monthly)

Series 2: Virginia Regional Employment (Monthly)

Series 3: Income & Compensation (Quarterly)

Follow us on. . .

Tumblr: <http://vahwdc.tumblr.com/>

About the Data

Data in this report are from the U.S. Department of Labor Bureau of Labor Statistics' Current Employment Statistics program. The CES program surveys about 143,000 businesses and government agencies monthly. Unless otherwise noted, this series uses data that are not seasonally adjusted. Seasonal variations related to weather, holidays, weekends, seasons and other predictable variations are apparent in the data. Short-term changes may be related to seasonal changes rather than underlying trends. Data from recent months is preliminary and subject to revision in future releases from the CES. Revisions will be reported in future editions of this series. Unless otherwise noted, the CES data presented in this series:

Includes:

- ◆ Data on employed individuals drawing a paycheck (payroll employees).
- ◆ All employees, regardless of role, occupation or hours worked.
- ◆ HC&SA employees in the private sector only.
- ◆ Persons employed by health professionals in private practice.
- ◆ Both government and private sector workers in nonfarm employment data.

Does not include:

- ◆ Self-employed workers or volunteers, including health professionals in private practice.
- ◆ HC&SA employees in the public sector. (These are counted as government workers in monthly reports).
- ◆ Information on hours worked or the quality of employment.
- ◆ Government workers in HC&SA level data. (Government workers, regardless of occupation and role, are classified as public sector employees).